



zaffaroni
TECHNOLOGICAL SYSTEMS

Switchboards

MV an LV Switchboards and Plants

THE POWER OF ENERGY

The F.lli Zaffaroni made significant experiences in M.V. an L.V. Switchgears assembling and Plants Installation. Main activities are the distribution and control switchgears manufacturing , testing and installation; the relevant electrical engineering is also developed and managed.

- Medium voltage standard boards (3 Kv 36 Kv)
- Pre-assembled MV boards, modular units type
- Pre-assembled LV boards, modular units type
- Motor control center
- Control, management and supervision synoptic boards
- Industrial automation and process boards AUTOMATION
- PLC and PC employment for machineries and production processes automation
- Process data acquisition and processing
- Modules and equipment for precise aims
- Continuous batching units on web or loss or weight, weighing and batching system

Program the activation of home appliances in times when energy consumption is most economical, it allows a conscious use of resources.

Our technology solution

Siemens, Bticino, Schneider Electric, ABB Sace

zaffaroni.org



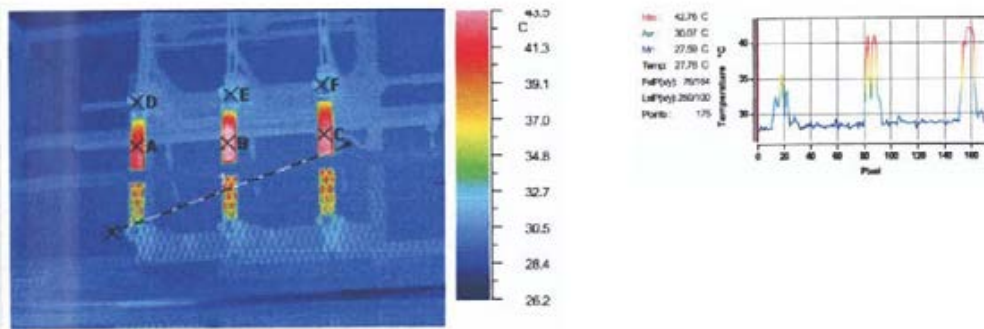
zaffaroni
TECHNOLOGICAL SYSTEMS

THERMOGRAPHIC ANALYSIS

Thermographic analysis on components and equipment to focus possible critical points advising warning signs for dangerous and deterioration situations.

This service is performed while equipment is working, controlling power circuits, indicating possible failures to be solved, and inspection reporting by highlighting the occurred failures and related suggested solutions.

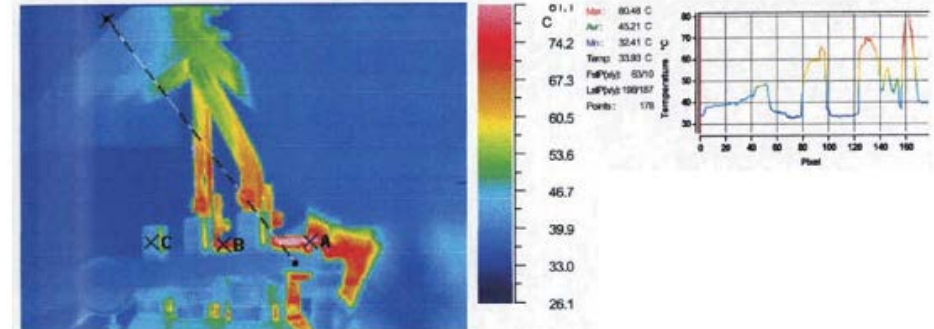
- Energy analysis to optimize energy and supply contracts management in a free or restricted trade
- Measures of earth resistance, pitch and contact voltage, continuity, impedances, and so on
- Measures inside medical rooms
- Analysis of electrical lines (harmonic measures, loads, cosyi, and so on)
- Chemical analysis
- Measures of electromagnetic pollutions



Cabina:	N 14
Utienza:	SEZIONATORE TRAFÒ
Componente:	FUSIBILI DI PROTEZIONE
Carico:	
Emissivit :	0,9
Temperatura ambiente:	30,7
Temperatura normale componente:	29
Temperatura Max componente sospetto:	43
Sovratemperatura:	14
Distanza:	3 m
commento:	VERIFICARE I DATI DI TARGA DEI FUSIBILI SE COMPATIBILI CON LE CARATTERISTICHE ELETTRICHE DEL TRAFÒ, EVENTUALMENTE SOSTITUIRLI.

Classe di difetto

- $dT > 35 \text{ }^\circ\text{C}$ (1) Necessita intervento immediato
- $dT > 10 \text{ }^\circ\text{C} < 35 \text{ }^\circ\text{C}$ (2) Da tenere sotto controllo
- $dT > 5 \text{ }^\circ\text{C} < 10 \text{ }^\circ\text{C}$ (3) Ricontrollare alla prossima ispezione termografica



Cabina:	N 10
Utienza:	TRAFÒ N 2
Componente:	CODOLI LATO BT
Carico:	
Emissivit :	1
Temperatura ambiente:	32,2
Temperatura normale componente:	40
Temperatura Max componente sospetto:	80
Sovratemperatura:	40
Distanza:	3 m
commento:	VERIFICARE LA BONTA' DELLE SUPERFICI DI CONTATTO DEI CODOLI.

Classe di difetto

- $dT > 35 \text{ }^\circ\text{C}$ (1) Necessita intervento immediato
- $dT > 10 \text{ }^\circ\text{C} < 35 \text{ }^\circ\text{C}$ (2) Da tenere sotto controllo
- $dT > 5 \text{ }^\circ\text{C} < 10 \text{ }^\circ\text{C}$ (3) Ricontrollare alla prossima ispezione termografica



SIEMENS
SIVACON

SIEMENS
SIVACON

SIEMENS
SIVACON

SIEMENS
SIVACON

SIEMENS
SIVACON





zaffaroni

TECHNOLOGICAL SYSTEMS

F.Ili Zaffaroni S.r.l.

info@zaffaroni.org
www.zaffaroni.org

Via Milano, 17
21040 Jerago con Orago (VA) - Italia
Tel. +39 0331 215090
Fax: +39 0331 213021

Corso Allamano, 141
10098 Rivoli (TO) – Italia
Tel. +39 0331 215090
Fax: +39 0331 213021

Chemin de Prédérès, 3
1276 Gingins - Suisse
Tel.+41 (0)22 3690050
Fax: +41 (0)22 3690600